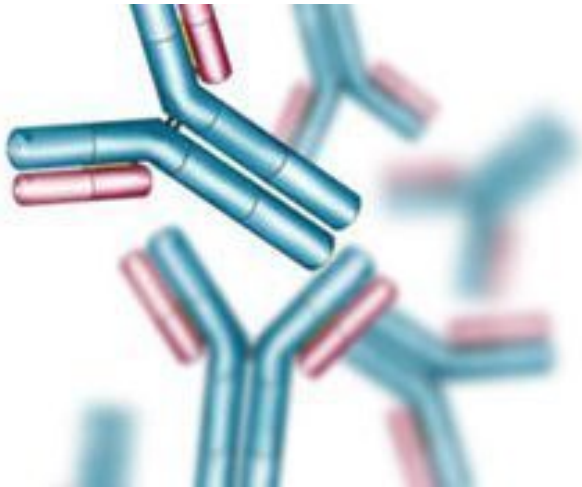


## CMC, RuiYi develop monoclonal antibodies cell line

15 May 2013 | News | By BioSpectrum Bureau



**Singapore:** US-based contract biopharmaceutical manufacturing CMC Biologics has collaborated with China-focused RuiYi to develop a cell line for RYI-008, a novel anti-IL-6 monoclonal antibody.

CMC Biologics' proprietary, CHEF1 high-productivity expression plasmid, will be utilized for the cell line development to optimize cell growth, and consistent, high-level protein expression in a rapid time frame. Specific terms of the agreement were not disclosed.

"We are excited to work with CMC Biologics, a global contract manufacturing organization known for its technical excellence in biopharmaceutical development and cGMP manufacturing," said Mr Paul Grayson, president and CEO, RuiYi.

"The integrated services, including cell line development using the proprietary CHEF1 system, along with CMC's responsive and collaborative interactive style made CMC Biologics the obvious partner for this important global effort," Mr Grayson.

"We are pleased with the opportunity to build a long-term relationship with RuiYi on the development of RYI-008. RYI-008 is an antibody with unprecedented potency and remarkable half-life, creating a significant opportunity to be a best in class product in the rapidly evolving field of IL-6 biology," said Dr Mark Sawicki, global VP, business development, CMC Biologics.