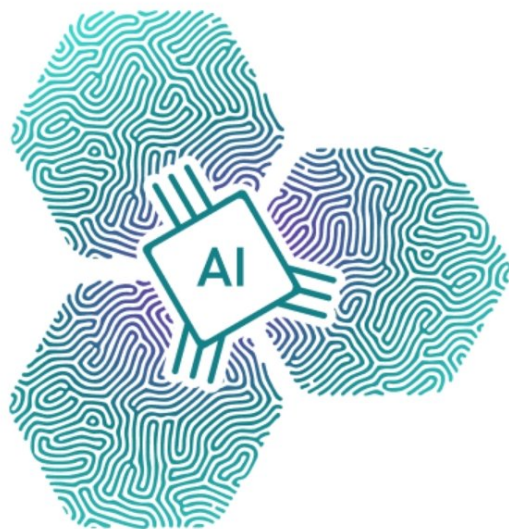


Revvity collaborates with Eli Lilly to expand access to AI drug discovery models

12 January 2026 | News

Collaboration funds participating biotechs to access Lilly predictive models through the Revvity Signals Xynthetica offering



US-based Revvity, Inc. has announced a collaboration with Eli Lilly and Company (Lilly) that expands access to Lilly's high-quality predictive models by making Lilly TuneLab available through the Revvity Signals platform. The collaboration builds on Revvity's recently introduced Signals Xynthetica™ offering, creating a scalable, federated framework designed to accelerate AI-enabled drug discovery.

Lilly TuneLab was established to make advanced AI/ML models, trained on decades of Lilly research data, available to the broader biotech community in exchange for data contributions that improve model performance through federated learning. The Signals Xynthetica platform operationalizes the delivery of the Lilly TuneLab models directly within the Signals platform, where experimental data is already captured, curated, and analyzed by thousands of discovery teams worldwide.

Through Revvity's Models-as-a-Service framework and its Signals Xynthetica offering, participating organizations will be able to apply Lilly's predictive models to their own discovery programs while keeping proprietary data private and secure. This approach amplifies the value of contributions from small and midsize biotechs, whose diverse experimental data can significantly enhance collective predictive performance.

As part of the collaboration, Lilly and Revvity will jointly fund access for selected participants, including access to Signals One and Signals Xynthetica software offerings and modeling credits.