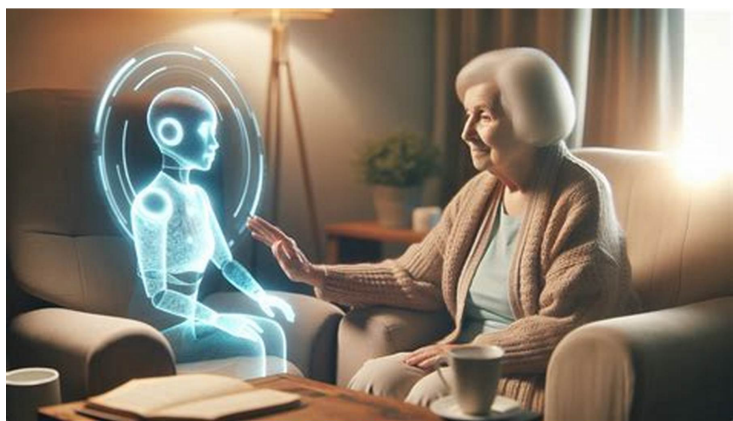


NEC Laboratories Singapore to launch prototype vision for AI-powered elderly care assistant

23 June 2025 | News

An early-stage prototype designed to promote greater independence for seniors ageing at home



NEC Laboratories Singapore will be introducing an early-stage prototype of its AI Elderly Care Assistant at the upcoming CHI Innovate 2025, to be held on 10–11 July 2025 at the Ng Teng Fong Centre for Healthcare Innovation in Singapore.

Presented under the concept "ElderWise – companionship that cares, support that lasts," this initiative reflects NEC's commitment to co-developing people-centric technologies that address the evolving needs of community care.

The AI Elderly Care Assistant is an early-stage prototype designed to promote greater independence for seniors ageing at home. It outlines a future where seniors can confidently manage daily life at home, supported by discreet AI-driven assistance that adapts to their habits and needs over time.

Through natural voice interaction, it enables users to manage daily tasks without needing to navigate complex interfaces. Beyond functional support, the assistant offers cognitive engagement through casual conversations and adaptive learning recognising individual habits over time.

For caregivers and providers, it offers real-time insights into a senior's day-to-day patterns. This proactive visibility allows care teams to intervene early, without disrupting the user's sense of autonomy.