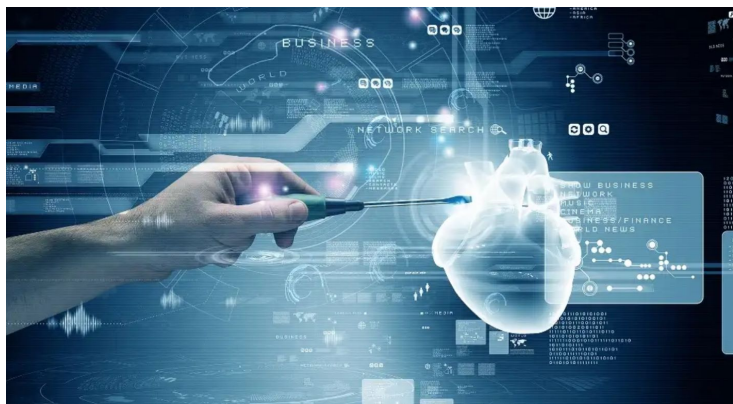


## **JETRO collaborates with Mayo Clinic to support Japanese digital health startups**

31 January 2025 | News

### **To Support five Japanese digital health startups in accessing medical data and developing AI models**



Japan External Trade Organisation (JETRO), in collaboration with the Mayo Clinic Platform (operated by the world-renowned US-based medical institution Mayo Clinic), has announced the selection of five startups to participate in the second phase of the "HealthTech Gateway 'AI Medical in the US'" acceleration programme. This phase will begin in January 2025 and will provide approximately 30 weeks of support.

In Phase 2, participants will have access to the Mayo Clinic Platform's medical data platform, enabling them to leverage data crucial for US and global expansion. Additionally, support for product development and validation, mentoring opportunities, and other resources will be provided.

Selected Companies for the Medical Data Utilisation Programme:

Smart Opinion Inc.- Develops AI diagnostic support software for breast ultrasound images for breast cancer.

Splink Inc.- Engages in brain healthcare and medical data infrastructure businesses.

Ubie Inc.- Offers services centered around its proprietary AI medical interview engine for consumers, medical institutions, and pharmaceutical companies.

YStory Inc.- Develops digital healthcare services for menopause using AI technology and medical science.

Yuimedi Inc.- Provides software and services for the utilisation of medical data.

In April 2025, participants will travel to Minnesota, USA, for a Demo Day event, including a five-minute pitch and networking with the Minnesota ecosystem stakeholders. These programmes aim to comprehensively support market entry into the US.

Phase 1 of the foundational programme included 16 startups, who participated from October to December 2024. This phase provided knowledge acquisition and strategy formulation support for market entry, as well as assistance in forming local connections.

This programme - supported by the Ministry of Economy, Trade and Industry - is an acceleration programme designed to support the US expansion of Japanese digital health startups, including those utilising AI. It is the first JETRO startup acceleration programme to collaborate with a medical institution.