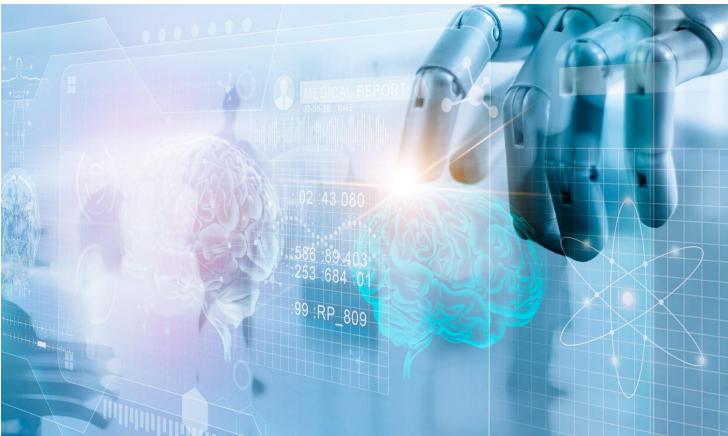


Siriraj Hospital in Thailand integrates AI to elevate medical research and diagnosis

05 August 2024 | News

To expand AI capabilities to include Mammogram and CT Brain analysis



The Faculty of Medicine Siriraj Hospital at Mahidol University, Thailand has announced the integration of artificial intelligence (AI) technology to improve medical analysis and diagnostic capabilities. This initiative aims to enhance accuracy in detecting abnormalities, diagnosing diseases, and optimizing the workflow of medical personnel.

'Detection of centroblast cells in H&E stained whole slide image based on object detection' is a key study that employs the You Only Look Once (YOLO) model, a state-of-the-art object detection algorithm, to identify and quantify centroblast cells in Hematoxylin and Eosin (H&E) stained whole slide images (WSI). This development is significant for lymphoma grading, facilitating more precise patient classification into stages 1, 2, or 3 based on the progress of the disease.

Siriraj Hospital's AI research extends beyond centroblast detection, encompassing various medical specialties including radiology, internal medicine, pathology, neurology, orthopedics, mental health, ophthalmology, and community healthcare. Notable applications include AI-assisted voice and face recognition for mental health assessment and the CHIVID app for COVID-19 symptom screening.

The hospital plans to expand its AI capabilities to include Mammogram and CT Brain analysis by the end of 2024.