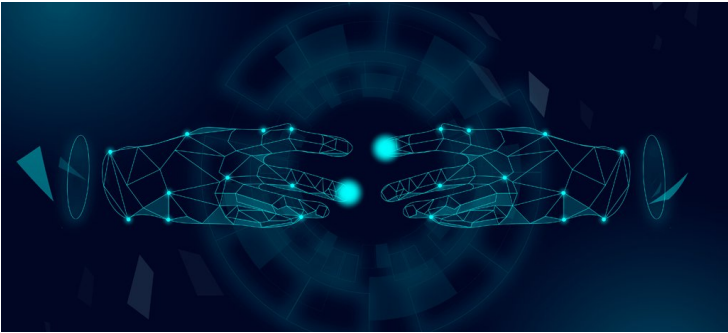


US-based startup Ryght partners with University of Adelaide for AI & biotech research

05 June 2024 | News

The collaboration will help establish South Australia as a global leader in AI and biotechnology



Ryght, a leading enterprise generative AI (GenAI) technology company improving clinical research in the US, has announced a new strategic partnership with the University of Adelaide, South Australia.

This collaboration will provide the University of Adelaide with the Ryght AI platform to enable and accelerate the adoption of artificial intelligence (AI) use cases across grant and industry-funded local, state, and federal government initiatives - all from an Adelaide hub.

The partnership will help establish South Australia as a leader in the Australian AI and biotech industries. It will foster collaborative research, development, and commercialisation initiatives between the two parties, while providing Ryght with highly qualified AI research experts who are uniquely embedded in the clinical and biomedicine fields to give it an advantage in the competitive global need for AI talent.

The University of Adelaide is a leader in health and life sciences, contributing significantly to Adelaide BioMed City, the largest health and medical research precinct in the southern hemisphere. Adelaide BioMed City's extensive health datasets will be instrumental in harmonising Ryght's software platform with these data assets, thereby enhancing the platform's capabilities and South Australia's effectiveness in the health and life sciences sectors.

The partnership with Ryght will provide a locally managed, sovereign, secure, and industry-tuned AI software platform to accelerate groundbreaking AI, research, and innovation. The University of Adelaide's Australian Institute for Machine Learning (AIML) is at the forefront of AI research, further enhancing its reputation as a leader in technology and innovation.