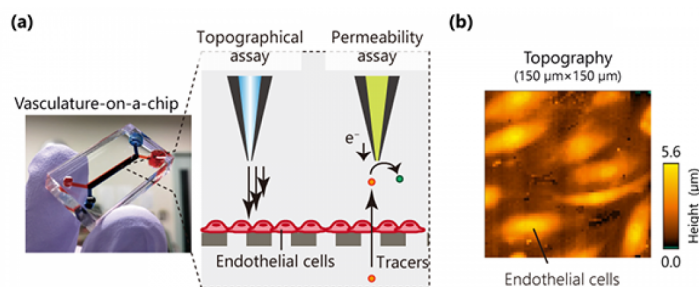


Japan invents organ-on-a-chip imaging tool to visualize cell functions

23 August 2021 | News

Microphysiological system (MPS), a 3D organ construct using human cells helps reveal how organs respond to drugs and environmental stimuli



Japan's Tohoku University researchers have developed a new analytical method that visualizes cell functions in MPS using scanning probe microscopy (SPM).

A microphysiological system (MPS), also known as an organ-on-a-chip, is a 3D organ construct using human cells that help reveal how organs respond to drugs and environmental stimuli.

SPM differs from optical microscopy since it employs fine probe scanning over a sample surface and then exploits the local interactions between the probe and the surface. The biggest advantage of SPM over conventional microscopy is that physical and chemical conditions can be acquired rapidly and as a high-resolution image.

In this study, SPMs evaluated a vascular model (vasculature-on-a-chip) by scanning electrochemical microscopy (SECM) and scanning ion conductance microscopy (SICM). Using these SPMs, the researchers quantified the permeability and topographical information of the vasculature-on-a-chip.

"MPS shows potential to recapitulate the physiology and functions of their counterparts in the human body. Most research on this topic has focused on the construction of biomimetic organ models. Today, there is an increasing interest in developing sensing systems for MPS" said first author Yuji Nashimoto.

Some have touted electrochemical sensors to monitor MPS. However, most electrochemical sensors cannot acquire the spatial information of cell functions in MPS because they have only one sensor per one analyte. In contrast, SPM provides spatial information about cell functions rapidly.

"Our research group has developed various electrochemical imaging tools, SPMs and electrochemical arrays. These devices will help usher in next-generation sensors in MPS" explained corresponding author Hitoshi Shiku.

Image Caption: Endothelial functions (permeability and topography) in a microphysiological system (MPS) are electrochemically visualized using scanning probe microscopies (SPMs). The analytical system is a new means to evaluate MPS or organ-on-a-chip (OoC).