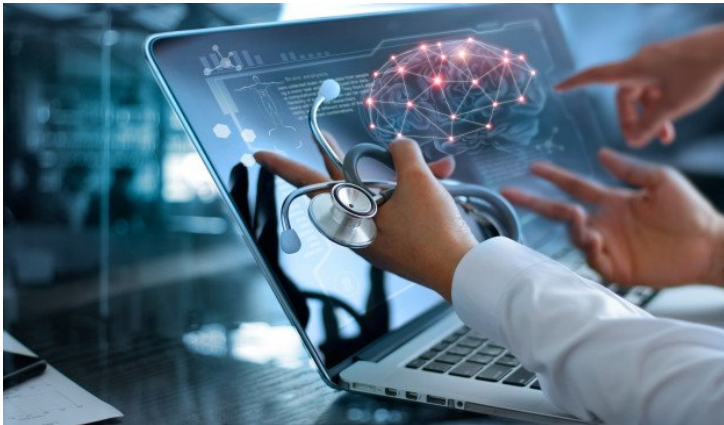


APAC Psychiatry symposium explores schizophrenia, bipolar disorder therapies

20 October 2020 | News

Over one thousand psychiatrists gather online to discuss and focus on new therapeutic targets, challenges in diagnosing and treating mental disorders



The Second Asia Pacific Psychiatry Symposium hosted by Luye Pharma Group took place as an online event on October 17, 2020. More than 1,000 psychiatrists and experts from 9 countries and regions including mainland China, Malaysia, Korea, Singapore, and Thailand gathered on "the cloud", to hold talks on the latest developments in the treatment of mental disorders, and on clinical diagnosis, treatment strategies and related challenges.

The Asia Pacific Psychiatry Symposium is positioned to be forward-looking, practical and innovative. A specialized academic platform addressing the latest developments in mental disorders and clinical practice, the symposium is now in its second year.

The agenda of this year's conference focused primarily on schizophrenia and bipolar disorder. Key topics included pipeline medications for schizophrenia, the pros and cons of long-term antipsychotic treatment in people living with schizophrenia, treatment of bipolar disorders in real world practice, and difficulties in the diagnosis and treatment of patients with bipolar disorder and the corresponding solutions. All of the topics triggered lively debate among the attendees.

Schizophrenia: exploring new therapeutic targets in drug development through an interdisciplinary approach

The participants shared their findings in interdisciplinary areas concerning schizophrenia, including the potential for drug development in the fields of psychiatry and neurology, and the potential targets and new mechanisms of action (MoA). They sought to provide new ideas for psychiatrists to develop new drugs that go beyond the traditional Dopamine-2 receptor and 5-HT₂ receptors. Regarding unmet needs in the treatment of schizophrenia, where there is significant potential for new therapies, such as in relieving negative symptoms and improving cognitive disorder, they examined and analyzed the therapeutic targets of new drugs as well as potential breakthrough therapies. In exchanges on interdisciplinary studies, experts offered advice to young psychiatrist participants that neurobiology is a frontier area worth studying and exploring, with much potential for new drug development, clinical diagnosis and treatment of mental disorders in the future.

Bipolar disorder: reducing missed diagnoses and misdiagnoses through the assessment of multiple factors

Bipolar disorder is a chronic disease that can constantly switch between remission and relapse, and it therefore requires special attention. In designing a treatment plan, there must be a comprehensive assessment of multiple factors, including the symptoms and progression, the bipolar type, the risk of suicide, the risk of violence, the efficacy of and tolerance to the drug used, the patient's compliance with treatment, and the patient's treatment history. Furthermore, regarding specific types of bipolar disorder, experts recommended drugs for first-line, second-line and third-line treatments, and pointed out that Quetiapine is one of the treatment options for the full spectrum of mood disorders.

Luye Pharma, the conference organizer, has had a long presence in the central nervous system (CNS) therapeutic area. In addition to offering high-quality and innovative drugs, the company is also committed to providing professional support and services to physicians and patients.