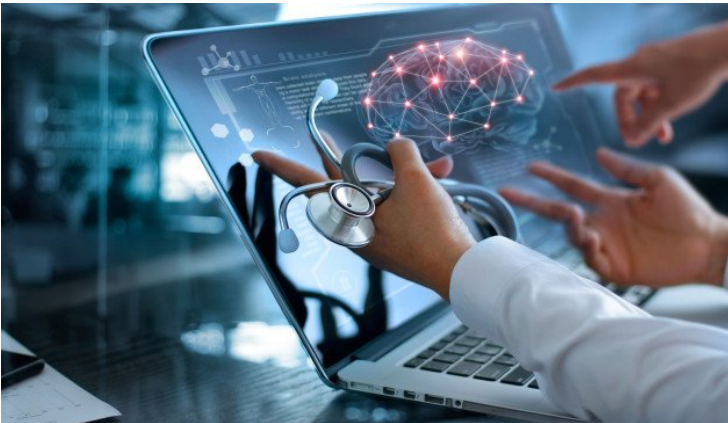


Healthtech startup Ubie raises \$18.7M in Series B financing

09 June 2020 | News

Ubie, Tokyo based HealthTech startup is providing AI-powered SaaS systems to hospitals



Ubie, a Tokyo based HealthTech startup who is the developer of AI-based healthcare products, has raised JPY2 billion (\$18.7M) in Series B financing led by SUZUKEN CO.,LTD, a Japanese pharmaceutical distributor that also entered into a strategic business partnership with Ubie.

With this new round of funding, Ubie seeks to realize rapid growth of its health-tech platforms, expand research and development capabilities, and staff its various sales and engineering teams. These funds will enable the company to quickly scale its Hospital SaaS (Software as a Service) product “Ubie for Hospital”, and its consumer application, AI symptom checker “Ubie”, to reach new partners and customers nationwide. In addition, Ubie also aims to expand its presence abroad in the near future as well.

Yoshinori Abe, Ubie co-founder and MD says “During these uncertain times of COVID-19 our mission is to develop a healthcare guide for everyone with our AI-based symptom checker and clinical decision support technology to make healthcare accessible to everyone by creating a “search engine” for healthcare”

Ubie is the provider of two applications, AI monshin Ubie and Dr Ubie. AI Monshin Ubie is the AI-driven medical inquiry SaaS targeting users at medical institutions, to support document creation of clinical records under supervision of specialists. Using NLP and question-setting algorithm, it automatically creates clinical document templates using AI-driven inquiry according to each patient’s answer type. Dr. Ubie is a disease prediction app for general users. This app was developed based on AI technology to detect future risk for diseases. It also adopted the disease name prediction algorithm based on probability / statistical model and ML technology.