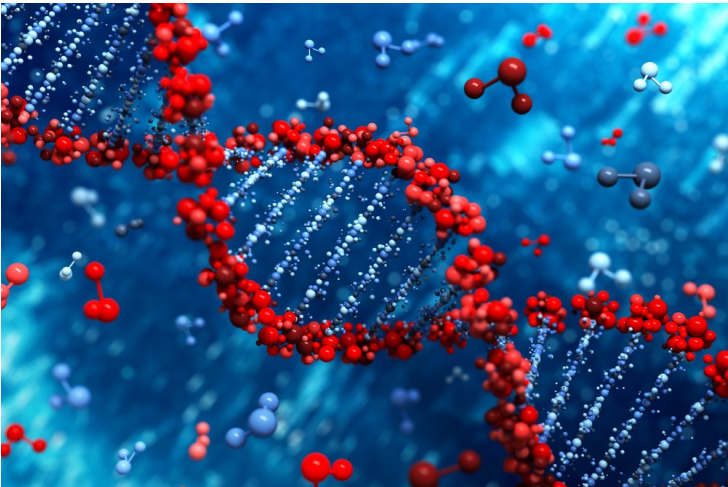


## Eisai and PGDx jointly start R&D of cancer genetics panel test

29 January 2020 | News

### Eisai and Personal Genome Diagnostics (PGDx) will use liquid biopsy to accelerate Next-Generation drug discovery and development



Japanese firm Eisai Co., Ltd., has entered into a joint research and development agreement with Personal Genome Diagnostics Inc., Maryland, for cancer genetics panel test, and it has initiated the research.

In this joint research and development, Eisai and PGDx will create a kitted cancer gene panel test that enables comprehensive analysis of mutation in more than 500 cancer gene using liquid biopsy with blood samples. Additionally, the kit will be used in our drug discovery and development.

In Eisai's medium term business plan "EWAY2025", Eisai is pursuing creating innovation focused in neurology area and oncology area aimed at realizing "prediction / prevention" and "cure". Aiming to acquire next-generation sequencing technology for realizing personalized cancer medicine, Eisai has concluded a joint research and development agreement with PGDx, a US bio-venture with liquid biopsy genomic expertise.

By analyzing the circulating tumor DNA (ctDNA) in the blood using its own created gene panel testing technology, Eisai will investigate the Cancer Evolution, which is a series of process such as developments of cancer cells, recurrence / metastasis and the appearance of acquired drug resistance. Eisai will also identify genetic abnormalities of drug resistance to existing anti-cancer agents that will be the targets of a new drug discovery and use a kitted cancer gene panel test for clinical trials to develop new anticancer drugs. Eisai will continue to work on cancer genome medicine for realizing early detection of cancer, and providing personalized cancer medicine and cures for cancer patients in the future.

In addition to accelerating cancer genome medicine based on the latest liquid biopsy technology, Eisai aims to build an oncology ecosystem, in which a longitudinal trajectory of cancer patients will be monitored, to lead to the creation of cures for cancer patients as well as diagnosis for prediction and prevention of cancer. Eisai will make continuous efforts to meet diversified needs of, and increasing the benefits provided to, patients with cancer, their families, and healthcare professionals.