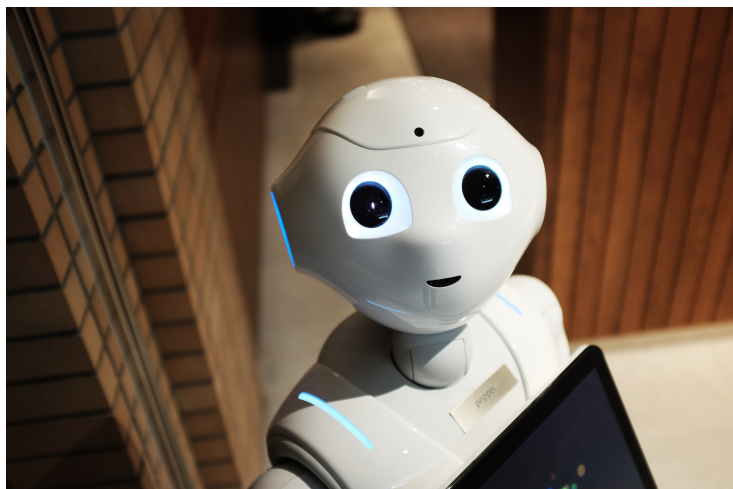


## 3M and M\*Modal Combine Advanced Technologies to Release First Joint Product

17 September 2019 | News

### AI-powered CDI technology will deliver real-time clinical insights



3M Health Information Systems has introduced 3M™ M\*Modal CDI Engage One™, a technology breakthrough resulting from 3M's acquisition of M\*Modal in February 2019. The new software brings the power of 3M and M\*Modal advanced artificial intelligence (AI) and natural language understanding (NLU) technologies to deliver real-time clinical insight to clinicians, clinical documentation improvement (CDI) specialists and coding teams. Advanced AI tools streamline document creation, assisting physicians in capturing the complete and accurate patient story, which helps drive better quality outcomes data and improved revenue integrity—all while giving physicians more time to care for patients.

CDI Engage One embeds AI-powered clinical intelligence into both standard physician and CDI workflows. It analyzes EHR notes and clinical data to find gaps and deficiencies, helping clinicians document the patient story upfront, completely and accurately, before notes are saved to the EHR. This means fewer CDI queries and less disruption to workflow, which helps reduce the administrative burden on physicians and allows more time for patient care.

"With M\*Modal now part of 3M, we are bringing together our advanced technologies to close the loop between advancing clinical care and achieving revenue integrity," said Mark Colin, President, 3M Health Information Systems. "CDI Engage One is the first result of our joint efforts to develop innovative products that transform the revenue cycle and help our customers succeed in a value-based care environment."

Built on a single, cloud-based platform, CDI Engage One integrates with the 3M™ 360 Encompass™ System, which is used by more than 2,000 healthcare organizations for computer-assisted coding, CDI workflows, concurrent quality metrics and analytics. With CDI Engage One, 3M 360 Encompass users can drive increased efficiency of back-end CDI processes and save hours of manual review with advanced AI tools for CDI worklist prioritization, streamlined CDI queries, and clinical evidence-based documentation analysis.

"Together, we are committed to transforming the experience of health care by proactively engaging physicians with real-time Computer-Assisted Physician Documentation to bridge gaps in patient care and clinical documentation integrity," said Michael Finke, Vice President, M\*Modal for 3M Health Information Systems. "Being ranked #1 KLAS® Category Leader for

CDI Software in the 2019 Best in KLAS: Software and Services report underscores the value we deliver to CDI teams and the confidence our clients have in our cloud-based AI technology to improve outcomes.”