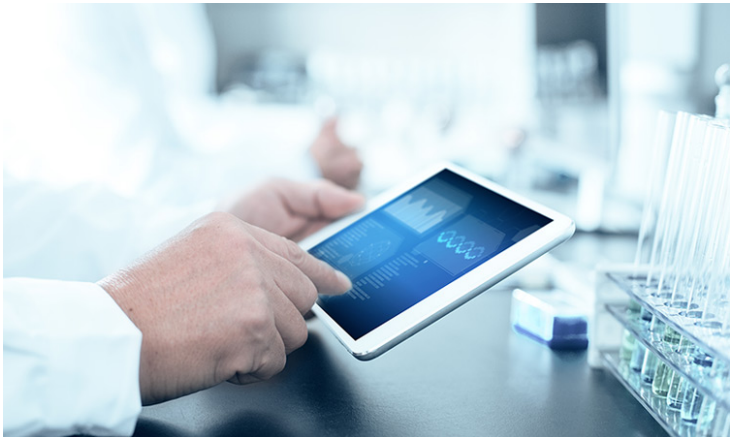


## WuXi AppTec to enhance biometrics services for clinical development

07 May 2019 | News | By Manbeena Chawla

### Pharmapace will become a wholly-owned subsidiary of WuXi Clinical



WuXi AppTec, a leading global pharmaceutical and medical device open-access capability and technology platform company, has announced that it has acquired Pharmapace, Inc., a US-based clinical research services company with expertise of providing high quality biometrics services for all phases of clinical trials, regulatory submissions, and post marketing support.

Upon the closing of this acquisition, Pharmapace will become a wholly-owned subsidiary of WuXi Clinical - the clinical CRO arm of WuXi AppTec - and will continue to focus on growing its core biometrics competences and integrate with WuXi Clinical's other clinical development services.

With the addition of Pharmapace, WuXi Clinical collectively has over 850 employees located in China and the United States. Together with close partners in Europe, Asia Pacific, WuXi can provide customers full services clinical development services as well as functional service provider (FSP) worldwide.

China's recent regulatory reforms that embrace overseas trial data provide an unprecedented opportunity for innovators around the world to accelerate and integrate clinical development both regionally and globally through the WuXi Clinical organization.