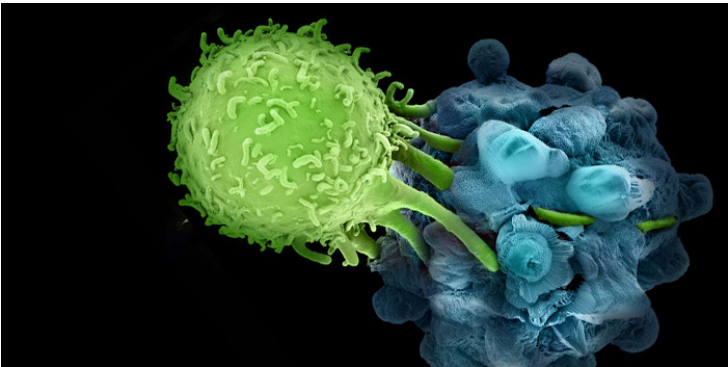


Torque collaborates with Thermo Fisher for immunotherapy facility

05 February 2019 | News | By Manbeena Chawla

Buildout of the Torque/Thermo Fisher manufacturing facility has begun, and the companies anticipate processing patient cells by the end of 2019.



Torque, an immuno-oncology company developing first-in-class Deep Primed T Cell Therapeutics to direct immune power deep within the tumor microenvironment, and Thermo Fisher Scientific Inc. have announced a collaboration to build a dedicated Slipstream manufacturing facility for high-efficiency production of Torque's Deep-Primed T cell immunotherapies.

Buildout of the Torque/Thermo Fisher manufacturing facility has begun, and the companies anticipate processing patient cells by the end of 2019. The Slipstream platform will initially be used in the clinical development of Torque's lead Deep-Primed T cell candidate, TRQ-1501, in solid and hematologic tumors; followed by TRQ-1201, also for solid and hematologic tumors.

The Slipstream platform technology situated in Princeton is a revolutionary design that uses a fully closed, semi-automated system that surpasses conventional cell therapy manufacturing techniques.