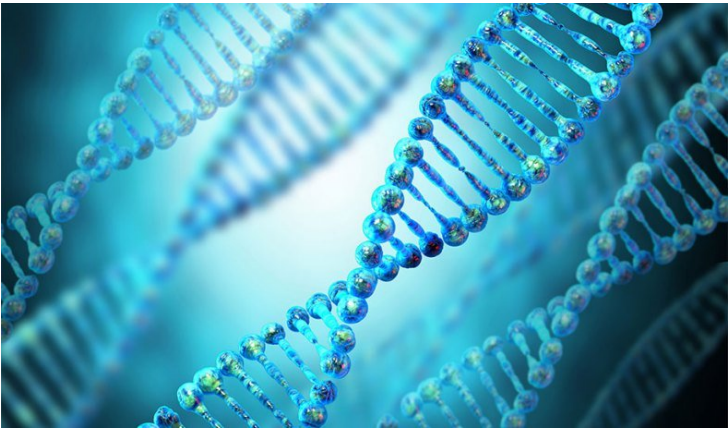


Crown Bioscience to expand GEM selection through new collaboration

16 August 2018 | News

SMOC leverages expertise in several gene editing technologies to develop conventional knockout (KO), conditional KO, transgenic knock-in and humanized models.



Crown Bioscience, a global drug discovery and development services company providing translational platforms to advance oncology, inflammation, cardiovascular and metabolic disease research, has entered a strategic alliance with Shanghai Model Organisms Center (SMOC) to exclusively license and commercialize SMOC's comprehensive collection of genetically engineered models, including proprietary transgenic and reporter models for oncology, cardiovascular and immunology research.

SMOC leverages expertise in several gene editing technologies to develop conventional knockout (KO), conditional KO, transgenic knock-in and humanized models. These capabilities are now exclusively available to CrownBio's international clients for custom model generation, breeding, IVF, rapid expansion and re-derivation capabilities.

SMOC specializes in model organisms and is dedicated to gene editing and life decoding. SMOC provides customized model generation, breeding, phenotype analysis and high-throughput screening.