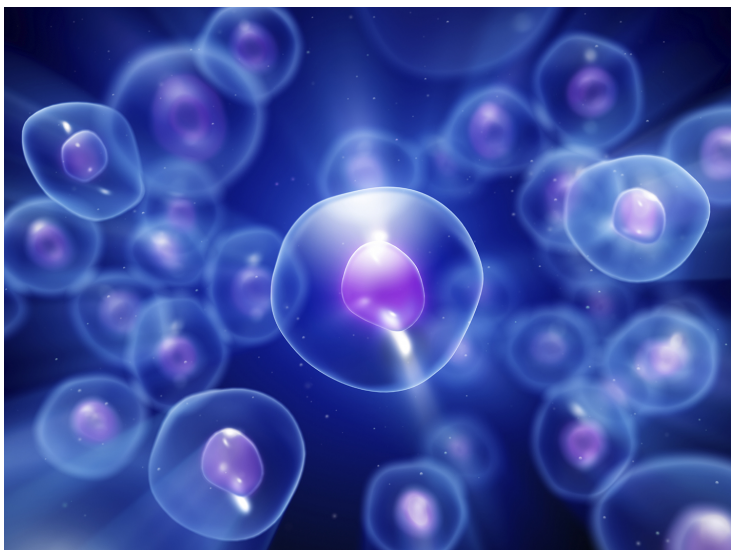


Xiangxue Pharma to build cell therapy facility

09 June 2018 | News

XPH is focused on cancer treatments based on a new-generation TCR T-cell therapy.



GE Healthcare will provide China-based Xiangxue Pharmaceutical (XPH) with a FlexFactory for cell therapy. The system, expected to be operational in March 2019, is a semiautomated end-to-end manufacturing platform to help scale up, digitize, and accelerate manufacturing processes for cell therapy clinical trials and future commercialization.

Cell therapy is one of the most rapidly advancing life science areas for basic cancer research and clinical applications. However, the manufacturing process is complex and is a challenge for companies to produce cell therapies at industrial scale.

This project marks the first application of FlexFactory for cell immunotherapy drugs based on high-affinity and high-specificity T-cell receptors (TCRs). XPH is focused on cancer treatments based on a new-generation TCR T-cell therapy.

GE Healthcare will also provide XPH with training services, process development, flexible cell processing equipment, and digital connectivity solutions.